

Inside

THE ISSUE

- Authentic and Green Olympic Village with BIM 5D
- Quadruped Robot
- Design Sustainable Cities Smarter
- Switching Construction Production Mode to Digital Twin Construction

NEWSLETTER

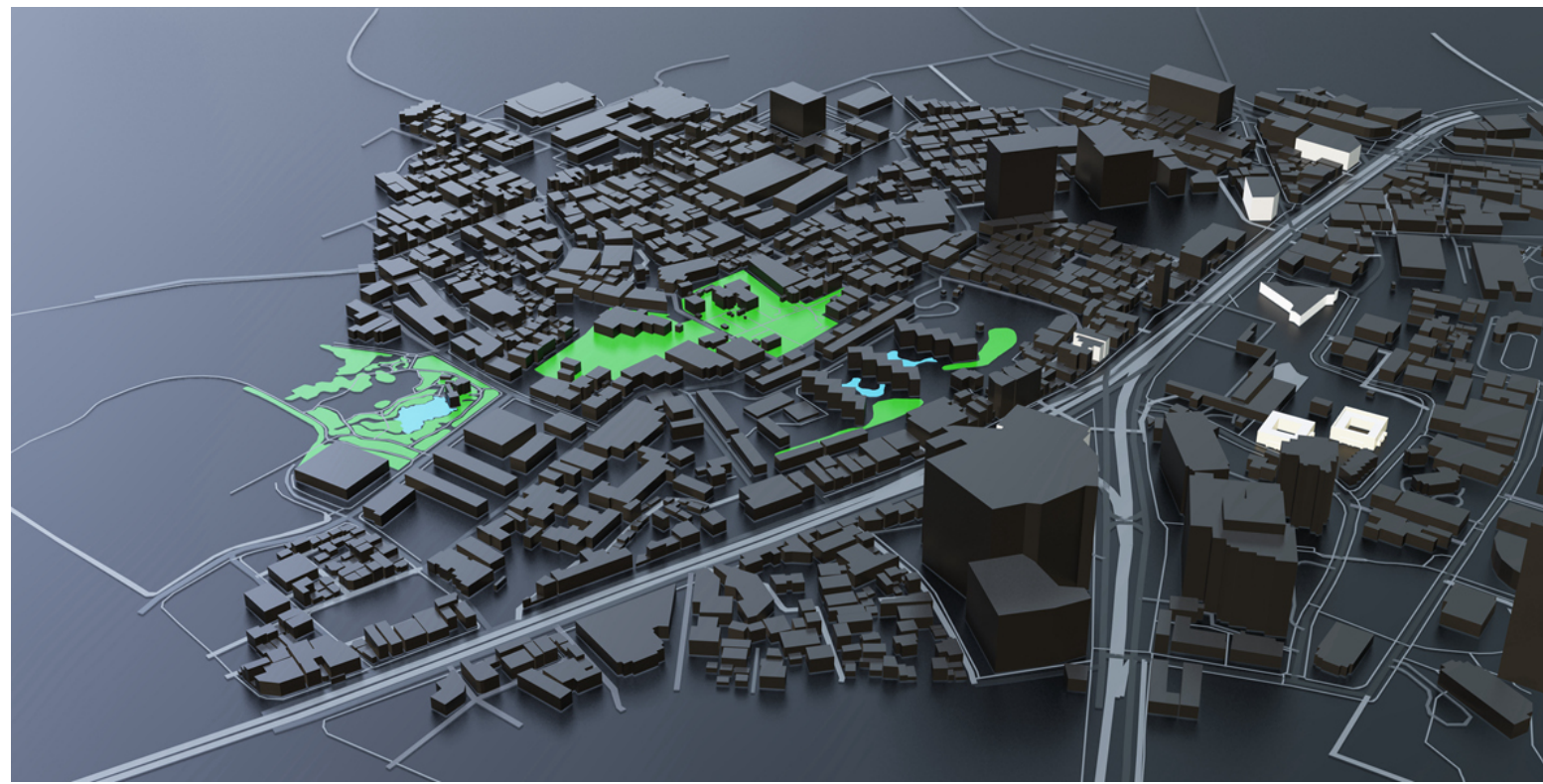
JANUARY 2022



The 2022 Winter Olympics in Beijing is around the corner. Glodon's Gsite and BIM+Smart Construction Site are applied in the Beijing Winter Olympic Village Project.

Check out how our technology helps maintain the unique historical, cultural and ecological environmental resources and minimize the disturbance to the mountains and forests in the venue, at the same time improving efficiency and safety and reducing workload and cost.

[Learn More](#)



Today's construction ecosystem is highly fragmented and less collaborative. Its level of digital adoption is also relatively low. Stakeholders at each stage are unlikely to gain the full value of data in different silos but suffer from reworks, delays and cost over-control. Also, the demand for a sustainable environment has mounted pressure on the industry, with many initiatives referring environment being developed to shape the whole industry significantly.

Changes are irresistible; challenges can also be opportunities. Read the article to learn how the digital building platform helps switch construction production mode from physical construction to digital twin construction.

[Read Article](#)



Cities are major contributors to climate change. They consume 78 per cent of the world's energy and produce more than 60 per cent of greenhouse gas emissions with less than 2 per cent of the Earth's surface. Citizens' lives are strongly affected by the built environment surrounding them.

Therefore, we have to develop more sustainable cities where citizens can live and work better. The digital transformation of cities can help meet sustainable goals. The question is, how could our cities be transferred to digital cities?

[Read Article](#)

The quadruped robot has superior environmental adaptability, excellent dynamic balance ability, and accurate environmental perception ability. Through settings, backend monitoring, and data analysis, etc., it can replace construction personnel in some complex work scenarios.



[Learn More](#)

**Drive a Clear International Business Development Strategy
Bringing Glodon at the Forefront of the Digital Transformation
and a Leader in the Built Environment**